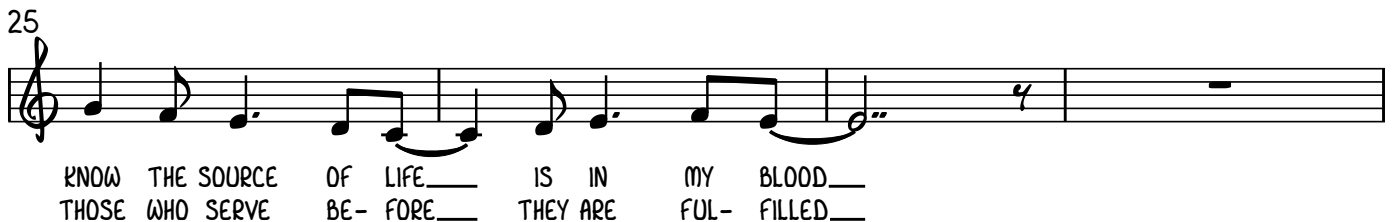
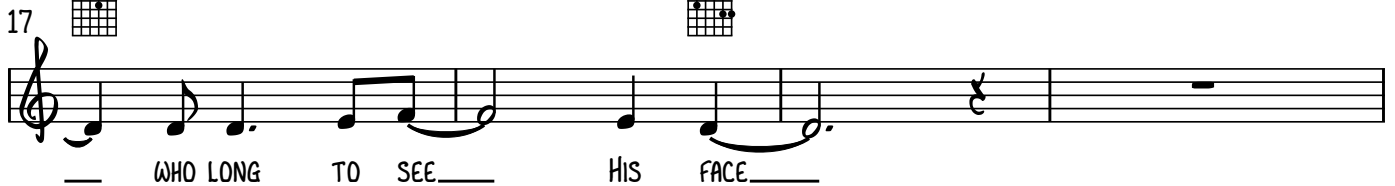
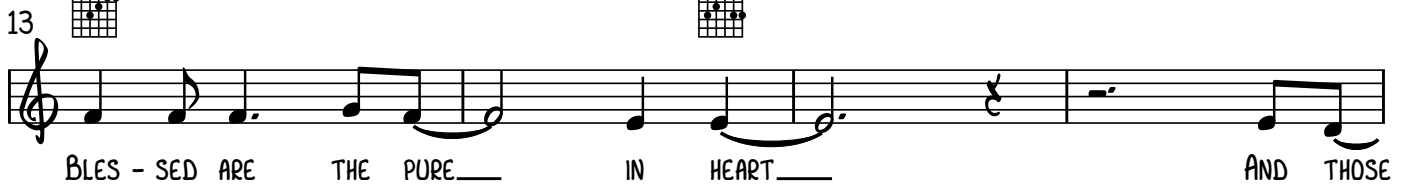
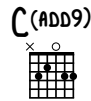
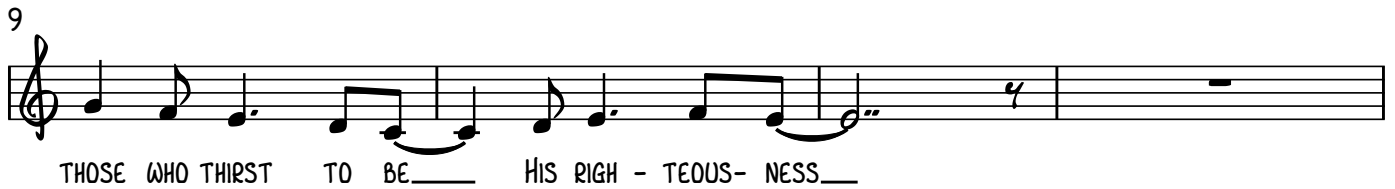
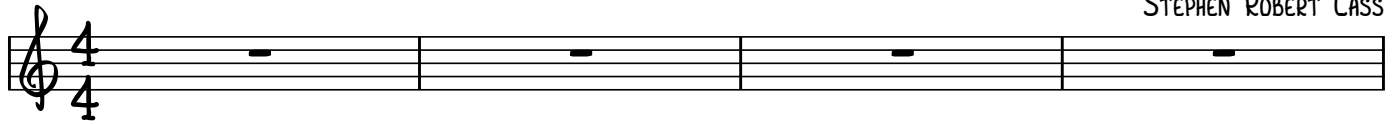
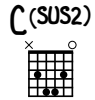


BEAUTIFUL ATTITUDE



STEPHEN ROBERT CASS



29 **F/A** **C(ADD9)**

BLES - SED ARE THE MER CI - FUL AND THOSE
BLES - SED IS THEIR SAC - RI - FICE THEIR DRIVE

33 **Dm7** **G/B** **G**

WHO WORK FOR JU - STICE DONE WHO
TO KNOW THE FA - THER'S WILL FOR

37 **F** **C**

THEIRS IS THE KING - DOM OF HEA - VEN WHERE

41 **G** **C**

GOD REIGNS IN GLO - RY FO - RE - VER AND

45 **F** **C** **Em7** **Am**

THEY WILL IN - HER IT THE EARTH AND LIVE WITH THE

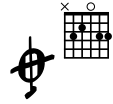
49 **F/A** **Fm/C**

KING OF KINGS BEAU - TI - FUL

53 **G/B** **C(ADD9)** **G/B** **C(SUS2)**

AT - TI - TUDE BEAU - TI - FUL AT - TI - TUDE

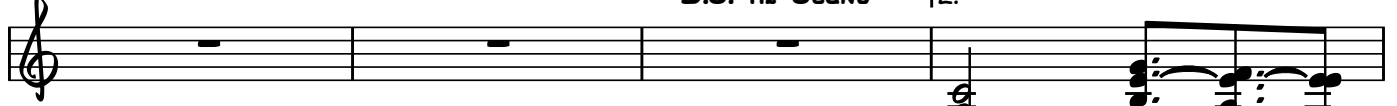
C(ADD9)



57

D.S. AL SEGNO

2.



TUDE

BEAU - TI - FUL

G/B



C(ADD9)



G/B



C(SUS2)



61

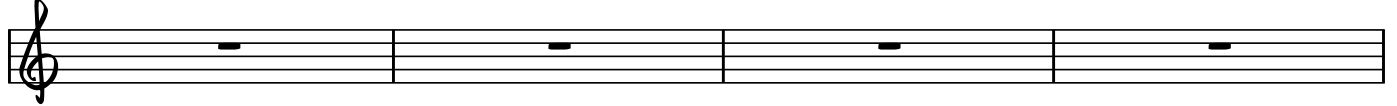


AT - TI - TUDE

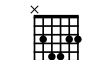
BEAU - TI - FUL

AT - TI - TUDE

65



C(SUS2)



69



ARRANGEMENT

- VERSE 1
- CHORUS
- VERSE 2
- CHORUS
- TAG

NOTE: TRY ONLY THE LOW HARMONY FOR THE FIRST CHORUS AND BRING IN THE MIDDLE HARMONY FOR THE SECOND CHORUS AND TAG

THE LYRIC FOR THE MIDDLE HARMONY DURING THE TAG IS "BE - ATTITUDE"